



EduTour®  
—→ www.edutour.org.in

# N E P A L



+91-969 402 0905 (IND)  
+44-739 383 4720 (UK)



www.edutour.org.in



contact@edutour.org.in

EDUTOUR GLOBAL PRIVATE LIMITED

Page: 01



# TRAVEL ITINERARY

NEPAL: 3 Night @ KATHMANDU / 2 Night @ POKHARA



## DAY 1: MUMBAI / DELHI - KATHMANDU

**Arrival Kathmandu Airport.**

Pickup by Private Coach and proceed for Hotel.

Hotel Check-in, Have Lunch and Proceed for After short refreshment around 13:00

Move to **Bhaktapur Durbar Square** and **Nagarkot for sunset**, Evening back to hotel Have dinner and Night stay.

Meal: Breakfast at Delhi Airport, Lunch & Dinner at Hotel.



## Day 02: Kathmandu Sightseeing

After breakfast at Hotel, Move for city sightseeing **Pashupatinath (Hindu Temple)**, **Budhanilkantha (JalNarayan)**, **Swayambhunath (Monkey Temple)** & **Kathmandu Durbar Square**. O/N stay at Hotel.

Meal: Breakfast + Lunch + Dinner



## Day 03: Kathmandu – Pokhara [210 Km – 8 Hours]

After breakfast, Drive to Pokhara Enroute visit **Chandragiri hill by Cable**. Could you arrive at Pokhara and check in at the hotel. O/N stay at Hotel.



# TRAVEL ITINERARY

NEPAL: 3 Night @ KATHMANDU / 2 Night @ POKHRA

## Day 04: Pokhara & City Sightseeing.

Early in the Morning Sunrise trip to **Sarangkot**, along with the view of Himalaya range of **Annapurna & Fishtail**. After breakfast, move to sightseeing in **Pokhara Valley**, including **Bindabasini Temple, Seti River, Devi's Fall, Gupteshwor Cave, Pumdikot Mahadev, and Tal Barahi Temple at Phewa Lake**. evening back to hotel have dinner and O/N stay at hotel.



## Day 05: Pokhara - Kathmandu

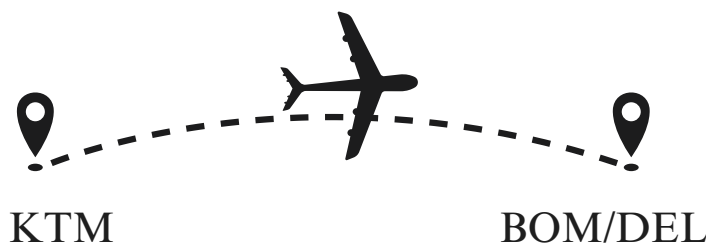
[210 Km – 6 Hours]

Morning after breakfast, Hotel Check-out and Depart to Kathmandu,  
After Arrival Hotel check-in, Have Lunch at hotel then evening time for shopping at local market. Hotel.



## Day 06: Kathmandu - Mumbai / Delhi

After breakfast, Checkout from Hotel, drive to Kathmandu airport to fly to Mumbai / Delhi.



*Happy Ending of Tour..!!*

*Bye*



+91-969 402 0905 (IND)  
+44-739 383 4720 (UK)



[www.edutour.org.in](http://www.edutour.org.in)



[contact@edutour.org.in](mailto:contact@edutour.org.in)



# TRAVEL ITINERARY

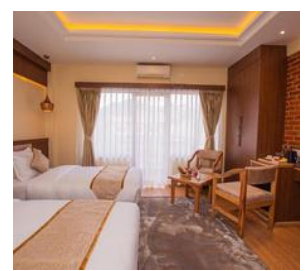
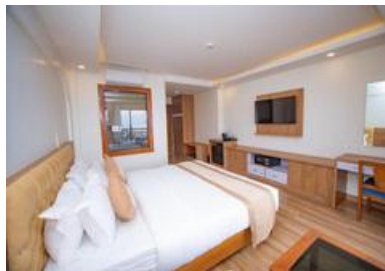
NEPAL: 3 Night @ KATHMANDU / 2 Night @ POKHRA

## HOTEL DETAILS:

- **KATHMANDU:** Hotel Lo-Mustang / G RAMAYANA - 4STAR or Similar



- **POKHARA:** Hotel Pokhara Village Resort / Hotel Temple Himalaya or Similar



## PACKAGE COST INCLUDES:



Flight



Insurance



Transport



Meals



Sightseeing

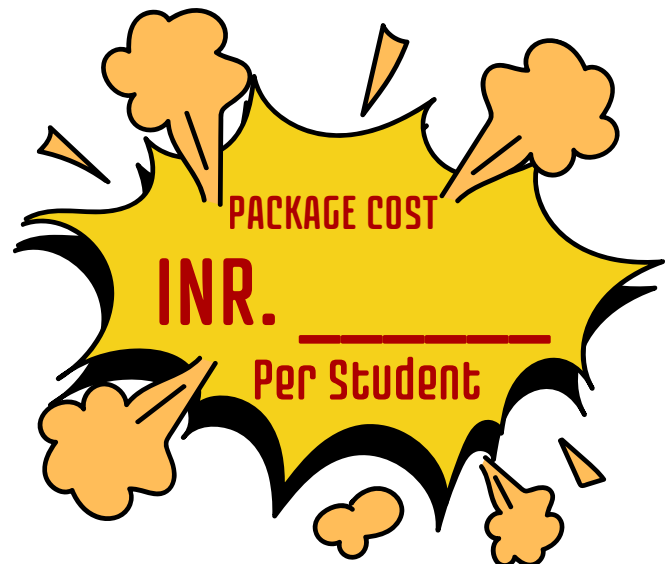


Hotel



Guide

- Travel Insurance.
- Return Airline from Delhi Airport. (DEL-KTM-DEL)
- Non-alcoholic welcome drink.
- All transfers by AC Bus. (30-person basis)
- 5 nights' accommodation triple sharing on AP basis.
- Meals: (5-Breakfast, 5-Lunch, 5-Dinner)
- Entry Fees at Monument Zones/Sightseeing Places.
- Cable car Tickets
- 1 Teacher FOC on 15 Paying Students.
- All applicable taxes.



## PACKAGE COST EXCLUDES:

- Personal Expenses (Medical Expenses, Beverages, Laundry, Tips for driver, etc.)
- All those expenses which are not mentioned in the itinerary.



# END OF PROPOSAL

## THANK YOU



+91-969 402 0905 (IND)  
+44-739 383 4720 (UK)



[www.edutour.org.in](http://www.edutour.org.in)



[contact@edutour.org.in](mailto:contact@edutour.org.in)